



# ORCHID CLOSE

FAREHAM, HAMPSHIRE

---

AN EXCLUSIVE COLLECTION OF  
2 & 3 BEDROOM BUNGALOWS  
SITUATED IN FAREHAM





BEAUTIFUL HOMES  
BUILT FOR LIFE

---

Orchid Close is an exclusive development of 7 bungalows, carefully planned layout situated close to Highlands Road, Fareham.

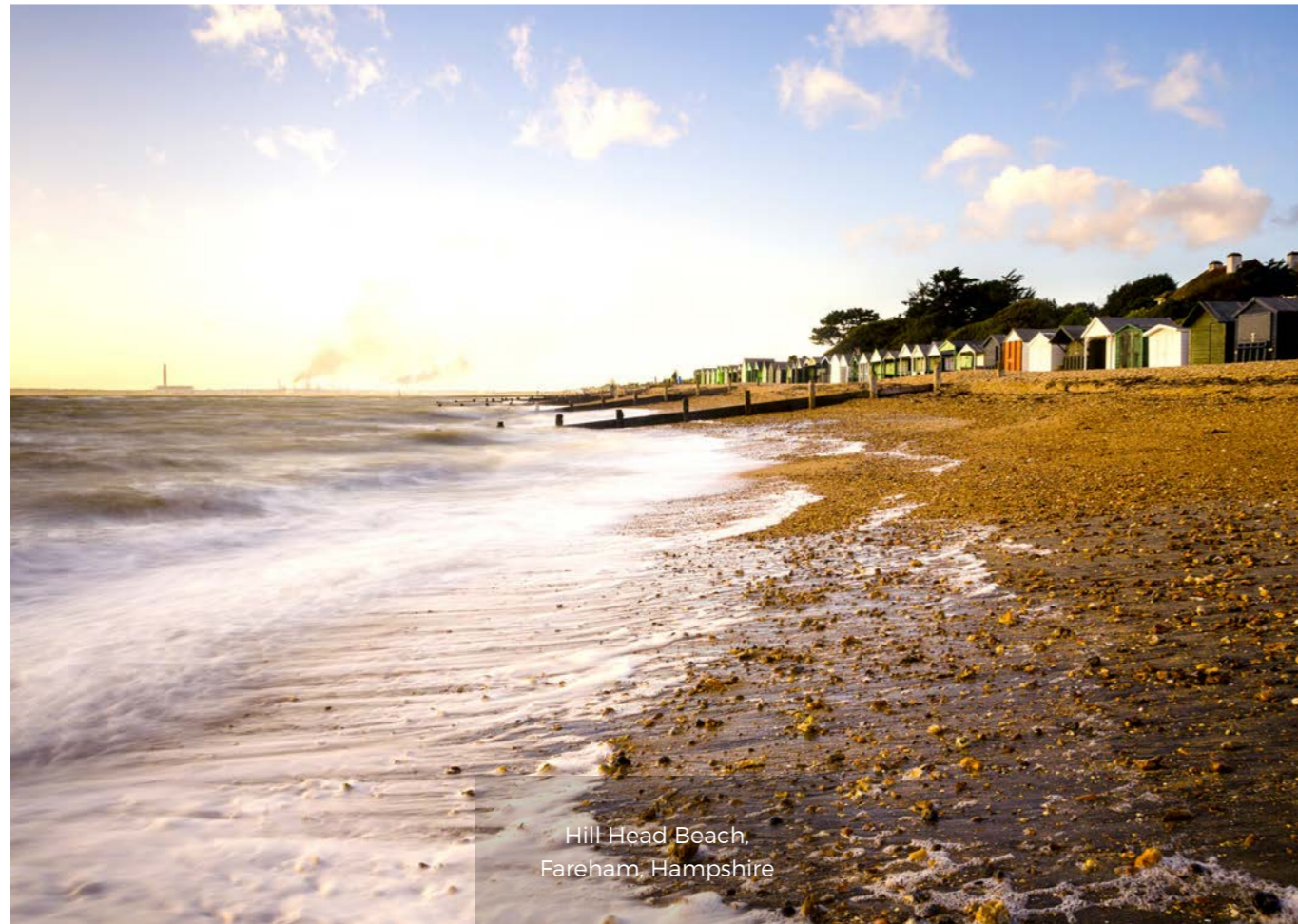
The development has been tastefully designed with materials carefully chosen to ensure perfect harmony between the new bungalows and the existing surroundings.

A traditional design has been incorporated to the outside of the properties, with external features such as feature brickwork, tiled roofs, bay windows and lantern style skylights.

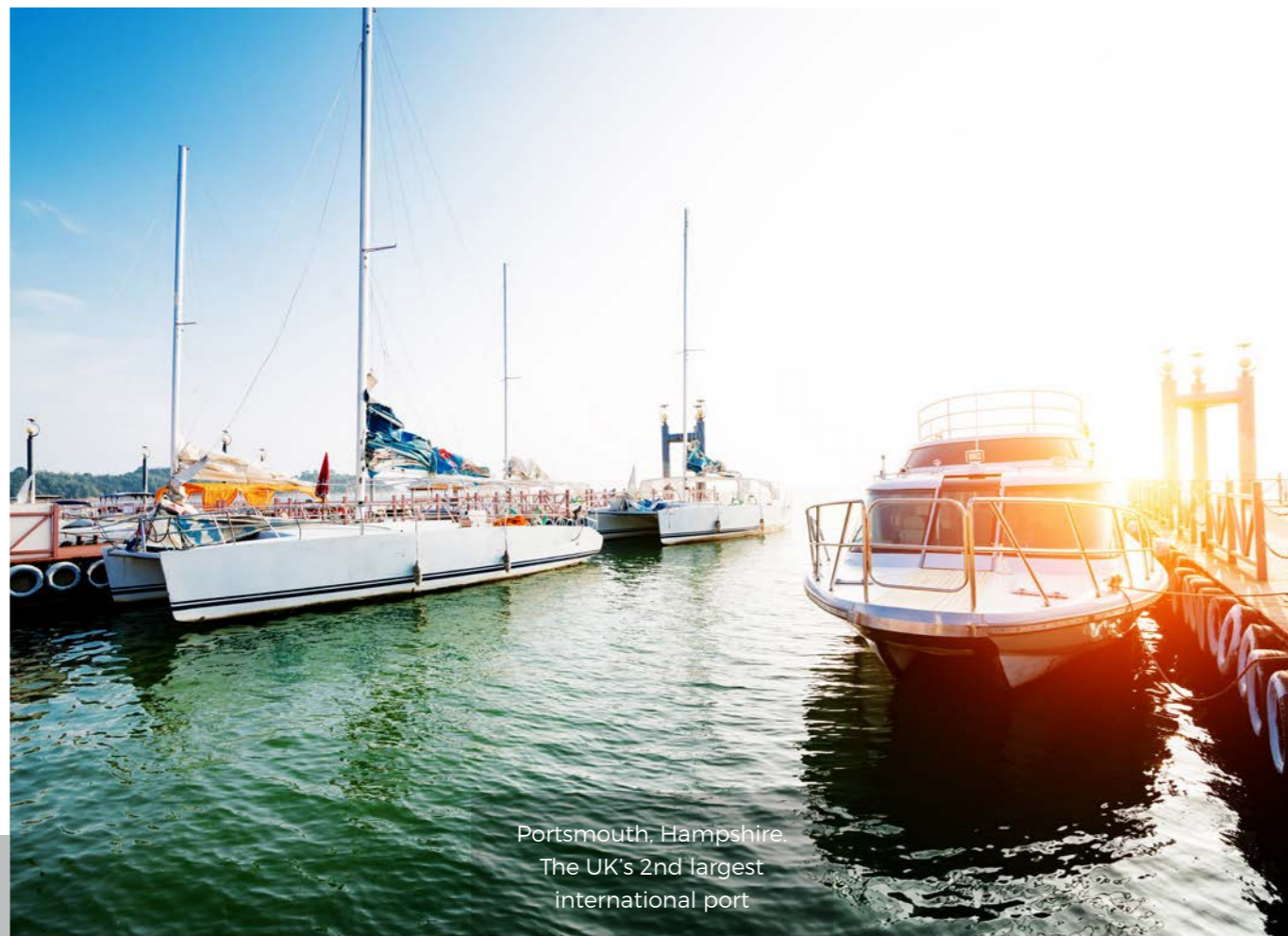
Inside every property benefits from a quality specification and attention to detail, expected from a quality new-build home.

Orchid Close is the perfect blend of classic and modern convenience to suit everyone.

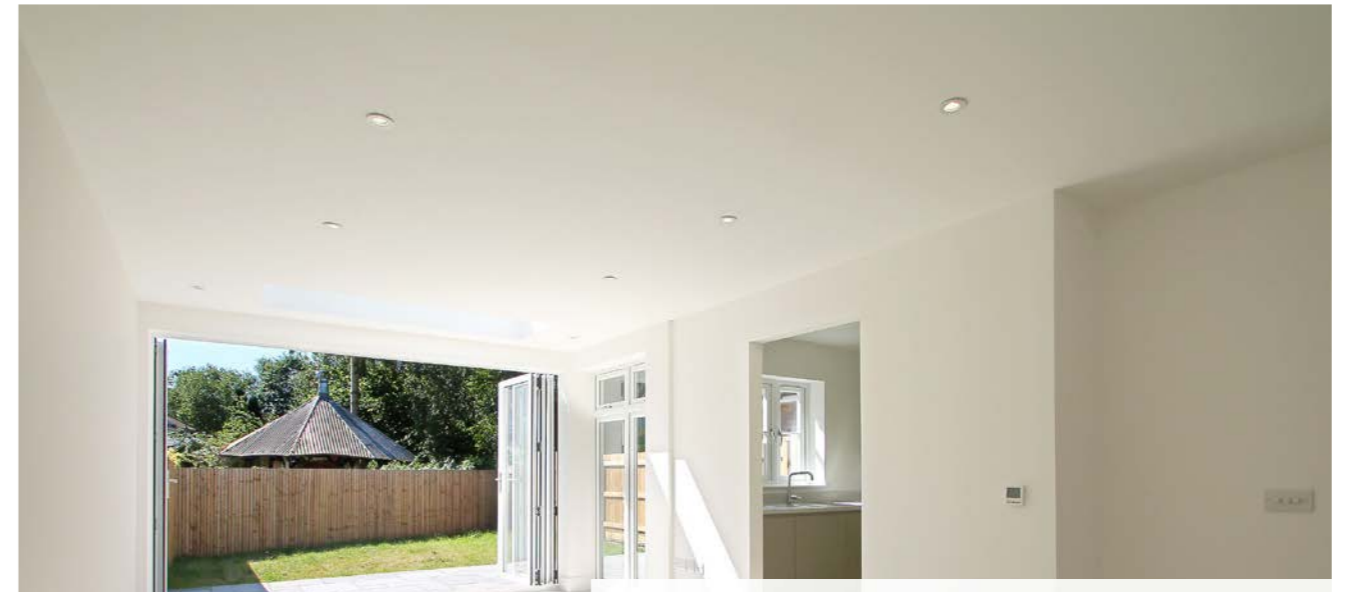




Hill Head Beach,  
Fareham, Hampshire



Portsmouth, Hampshire  
The UK's 2nd largest  
international port



## DESIGN & SPECIFICATION

All the homes are constructed from carefully selected materials, taking account of quality, longevity and sustainability.

We build our homes with modern construction techniques and detailing, incorporating modern materials and high-quality fixtures & fittings. Our new homes embrace technology and benefit from environmentally friendly features such as energy efficient heating systems, high level insulation and under-floor heating, helping to make your home easier to run more efficiently and cost efficient.

## ABOUT DRIFTSTONE HOMES

Driftstone Homes are experts in creating beautiful homes throughout Hampshire and West Sussex.

Our award-winning architects create spacious, well designed homes suited to modern living across a wide variety of developments including houses, bungalows and apartments.

Driftstone's architects and interior designers are fully involved from the outset, ensuring that every home is finished professionally, on time, and to a very high standard.



## SPECIFICATION

### EXTERNAL

#### BUILD

Timber Frame Construction  
with Brick Clad

#### WINDOWS

White UPVC Double  
Glazed windows

#### FRONT DOORS

Composite Coloured

#### BRICKWORK

Audley Antique

#### FEATURE BRICKWORK

Ibstock Holmwood  
Natural Orange

#### ROOF

Imery Volcano

### HARD SURFACING

#### MAIN ACCESS

Brett Regatta Silver Haze –  
Indian Stone

#### PARKING SPACES

Brett Regatta Autumn

#### PATIOS AND PEDESTRIAN ACCESS

Global Slabs Castle Grey

### INTERIORS

#### DOORS

Pre-finished Oak Viner  
Vertical Slat Door  
Chrome Finish Door Handle  
Skirting & Architrave Moulding  
MDF Square Edge Skirting –  
White Gloss

#### KITCHEN

Worktops, units, appliances\*  
Kitchen & Bathroom Walls  
and Flooring  
Porcenosia Floor Tiles and  
Bathroom Tiles\*

#### BATHROOM

Porcenosa WC, Basin^  
Chrome finish mixer fixtures  
and fittings ^

#### FLOORING

Carpet to lounge, bedrooms,  
entrance hall

#### WALLS

Painted – Dulux Matt  
Emulsion - Timeless

\*plot specific please ask for  
more details

^please ask for more details

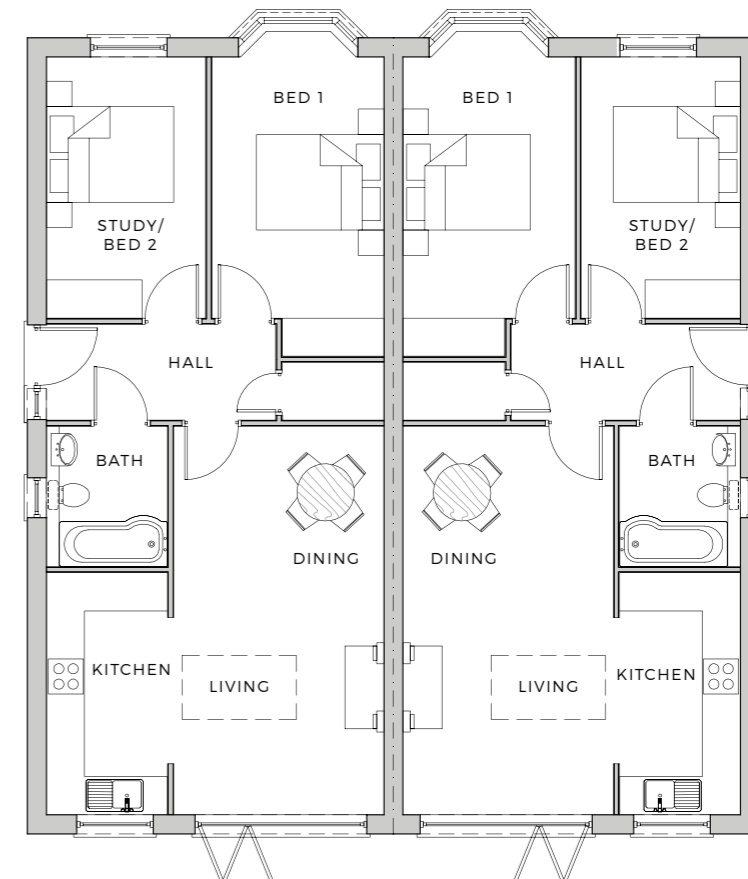


OUR SPECIALIST TEAMS OF  
CRAFTSMEN USE THE FINEST  
MATERIALS FROM CERTIFIED  
SOURCES TO MAKE SURE THAT EVERY  
HOME IS OF THE HIGHEST QUALITY.



Fareham Creek,  
Hampshire

## PLOTS 1-4



## DIMENSIONS

LIVING ROOM  
3233 X 6000

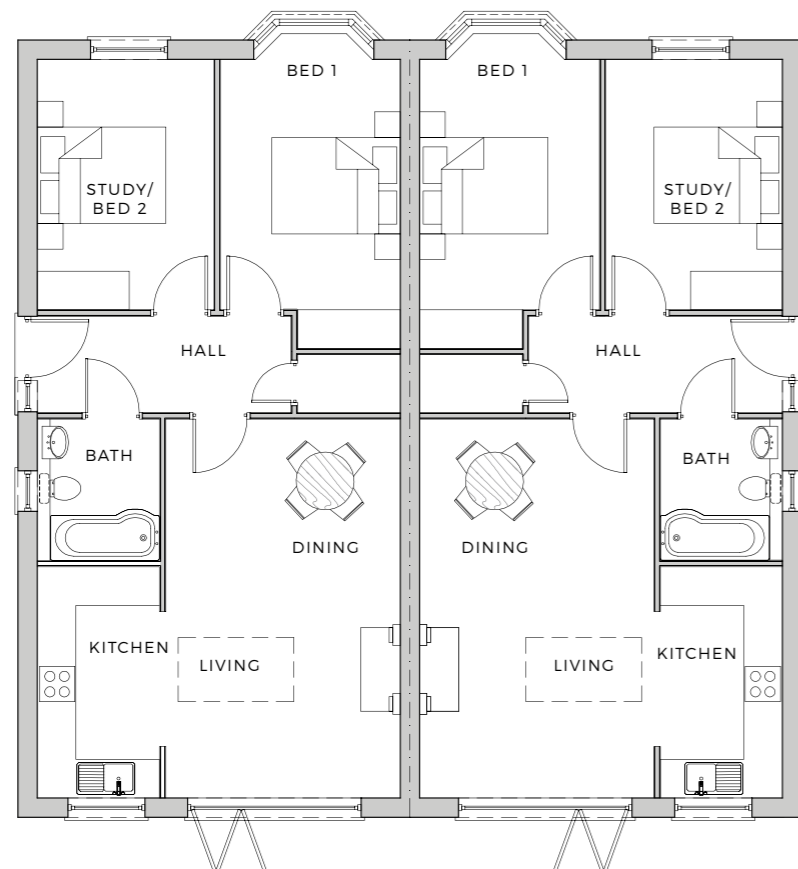
KITCHEN  
2000 X 3800

BEDROOM ONE  
2750 X 4490

BEDROOM TWO  
2483 X 4075

BATHROOM  
2000 X 2200

PLOTS 5-6



DIMENSIONS

LIVING ROOM  
3589 X 5850

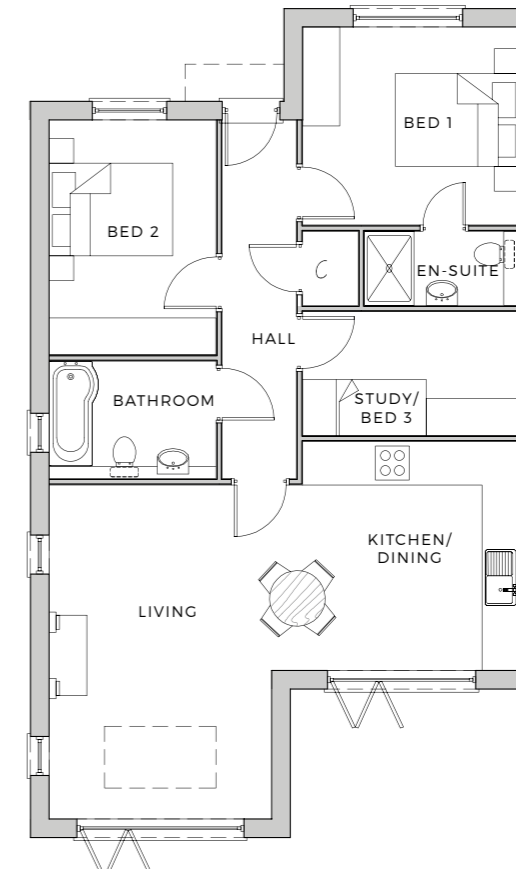
KITCHEN  
2000 X 3650

BEDROOM ONE  
2840 X 3875

BEDROOM TWO  
2743 X 3875

BATHROOM  
2000 X 2200

PLOT 7



DIMENSIONS

LIVING ROOM  
3594 X 5216

KITCHEN  
3697 X 3427

BEDROOM ONE  
3444 X 3927

BEDROOM TWO  
2700 X 3875

STUDY  
2632 X 2100

BATHROOM  
2700 X 2925





# ORCHID CLOSE

FAREHAM HAMPSHIRE

**DRIFTSTONE**  
*Homes*

24 Palmerston Business Park  
Fareham  
Hampshire PO14 1DJ  
t 02392 006293  
e [enquiries@driftstonehomes.co.uk](mailto:enquiries@driftstonehomes.co.uk)

**Chapplins**  
A family business



9 -11 West Street  
Fareham  
Hampshire PO16 0BG  
t 01329 283330