



Design

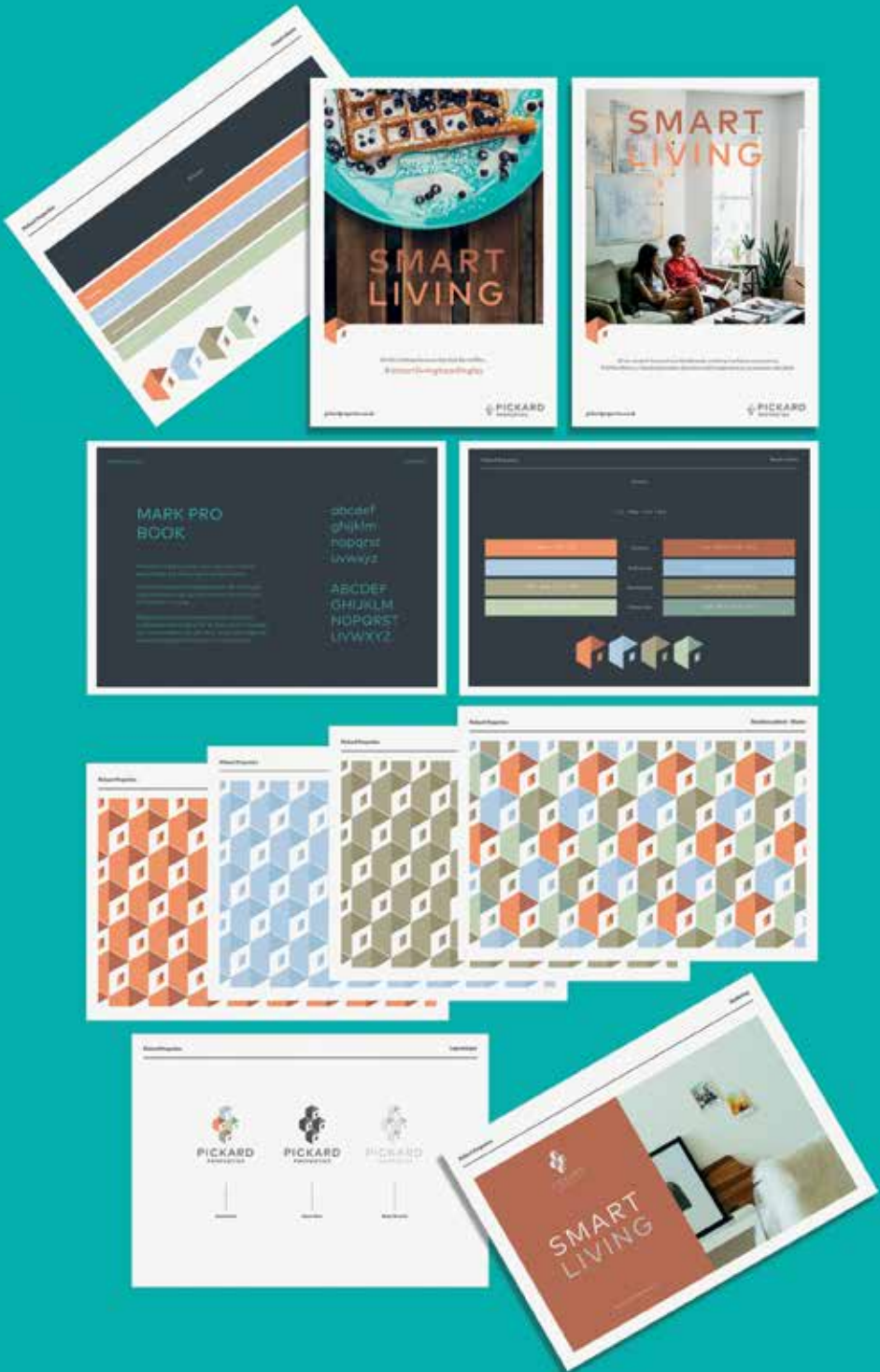
# PRICE LIST

Version 6

# branding

<b>New logo</b> 3 options (Name not already identified)	<b>£360</b>
<b>New logo</b> 3 options (Name already identified)	<b>£180</b>
<b>Logo redraw</b>	<b>£60</b>
<b>Logo refresh</b>	<b>£180</b>
<b>Brand refresh</b> (Speak to our design team for a campaign consultation specific to your requirements)	<b>£1,200</b>
<b>Brand creation</b> Not including brand guidelines	<b>£1,400</b>
<b>Brand creation</b> Including brand guidelines	<b>£2,150</b>

Up to five working days for first proof.



<b>CGI Front Exterior</b> Per view	Quote on request
<b>CGI Rear Exterior</b> Per view	Quote on request
<b>Kitchen, Lounge, Diner</b>	Quote on request
<b>Kitchen, Diner</b>	Quote on request
<b>Lounge</b>	Quote on request
<b>Bedroom</b>	Quote on request
<b>Bathroom</b>	Quote on request
<b>Any other room</b>	Quote on request
<b>CGI Areial View</b>	Quote on request
<b>3D Floor Plans</b>	Quote on request
<b>2D Floor Plans</b> Clean up and colour	From £200
<b>2D Site Plans</b> Clean up and colour	From £200

Floor/site plans up to five working days.



# business stationery

<b>Business Card</b> - 85mm x 55mm	<b>£60</b>
<b>A4 Letterhead</b> - 210mm x 297mm	<b>£60</b>
<b>DL Compliment Slip</b> - 210 x 99mm	<b>£60</b>
<b>Stationery Package</b> Business card, letterhead & DL compliment slip	<b>£120</b>

HALF PRICE  
DESIGN WITH  
ANY MARKETING  
TOOLKIT  
UPLOAD

Up to five working days for first proof.

SAVE £60  
WITH A  
STATIONERY  
PACKAGE



# posters & flyers

<b>DL</b> - 210mm x 99mm	<b>£60</b>
<b>A6</b> - 105mm x 148mm	<b>£60</b>
<b>A5</b> - 148mm x 210mm	<b>£60</b>
<b>A4</b> - 210mm x 297mm	<b>£60</b>
<b>A3</b> - 420mm x 297mm	<b>£60</b>
<b>A2</b> - 594mm x 420mm	<b>£60</b>
<b>A1</b> - 841mm x 594mm	<b>£60</b>

HALF PRICE  
DESIGN WITH  
ANY MARKETING  
TOOLKIT  
UPLOAD

Up to five working days for first proof.





# template brochures

Property particulars for:

- Microsoft Word template and print via MyRavensworth
- Bespoke (Ravensworth hold the template and populate on your behalf)

2 page brochure - 210mm x 297mm	£60
4 page brochure - 210mm x 297mm	£60
6 page brochure - 210mm x 297mm	£60
8 page brochure - 210mm x 297mm	£120
12 page brochure - 210mm x 297mm	£180
16 page brochure - 210mm x 297mm	£240
20 page brochure - 210mm x 297mm	£300



Example of a six page landscape brochure.

PORTRAIT &  
LANDSCAPE  
AVAILABLE

Up to five working days for first proof.

\*Word templates: we require an image from your camera before we design and build the templates.  
All content must be supplied before we design and build the templates.

# bespoke designed brochures

Designed bespoke to your requirements such as:

Company brochures

Property brochures

Development brochures

2 page brochure - 210mm x 297mm	£120
4 page brochure - 210mm x 297mm	£240
6 page brochure - 210mm x 297mm	£360
8 page brochure - 210mm x 297mm	£480
12 page brochure - 210mm x 297mm	£540
16 page brochure - 210mm x 297mm	£660
20 page brochure - 210mm x 297mm	£780



PORTRAIT &  
LANDSCAPE  
AVAILABLE

Up to five working days for first proof.  
Price includes, floor plans, site plan and stock photography.  
All content must be supplied prior to work commencing.

# document folders

A4 & A5 Document folder	£120
Die set up	£60



Example of a die cut docufolder with 5mm capacity.

Up to five working days for first proof.  
Selection of pre-set dies are available.



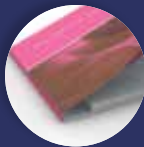
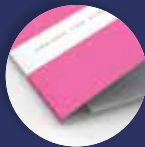
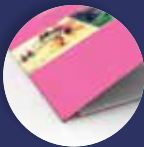
Example of a standard docufolder with a stick-on pocket.  
5mm capacity.  
Pocket is always supplied white.

Standard and die cut docufolders are available in

0mm capacity

3mm capacity

5mm capacity





# window cards

## TEMPLATE & BESPOKE

<b>A4</b> - 210mm x 297mm	<b>£60</b>
<b>A3</b> - 297mm x 420mm	<b>£60</b>
<b>A2</b> - 420mm x 594mm	<b>£60</b>
<b>A1</b> - 594mm x 841mm	<b>£60</b>



Template: Up to 48 hours for first proof.  
Bespoke: Upto five working days for first proof.

# exhibition & large format

Roller banner	£120
Modular 5 panel pop up display, inc. plinth wrap	£300
Banners	£60
A-board inserts (See available sizes on page 6)	£60
Development signage (Hoarding and V-Signs)	£150
Sales and Letting board designs	£120



Up to five working days for first proof.

# digital

## EMAIL & SOCIAL MEDIA

<b>Email Signature</b>	<b>£180</b>
<b>Additional email signature*</b>	<b>£30</b>
<b>E-shots</b>	<b>£120</b>
<b>E-invite</b>	<b>£60</b>
<b>E-mail template HTML Build including design</b> Other email platforms	<b>£240</b>
<b>Social media image</b>	<b>£90</b>
<b>Web banners</b> Portal website banners	<b>£90</b>



Up to ten working days for first proof.

\*Includes contact details, web links changed & staff image update.

# digital

WEBSITES

<b>Land &amp; New Homes Microsite</b> (Content used from a development brochure. Up to 5 pages)	<b>£480</b>
<b>Installation of SEO plugins</b> (Google Analytics)	<b>£120</b>

All websites are fully responsive.

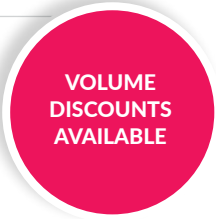


Up to ten working days for first proof.

# digital

## BROCHURES & WINDOW CARDS

<b>Digital Flipping Book</b> Standard	<b>£60</b>
<b>Digital Flipping Book</b> Premium	<b>£90</b>
<b>Digital Flipping Book</b> Corporate	<b>£120</b>
<b>Window Cards</b>	<b>£90</b>



Up to five working days for first proof.



# advertising

1/4 page	£60
1/2 page	£60
Full page	£120
Double page spread	£180



Up to five working days for first proof.

# magazines

12 pages - 210mm x 297mm	£600
24 pages - 210mm x 297mm	£1,080
48 pages - 210mm x 297mm	£1,800



Up to five working days for first proof. Price includes stock photography.  
All content must be supplied prior to work commencing.  
Up to 12 pages - Saddle stitched. 24 pages and up - Perfect bound.



# marketing campaign

## 1 campaign

(Speak to our design team for a campaign consultation specific to your requirements)

Quote on request

Up to 10 working days for first proof.



# Photofixr™

## Basic Photofix

A basic retouch will drastically improve the quality of your photo and bring the property to life

£2.95

## Object Removal Photofix

A basic retouch plus object removal

£5.95

VOLUME  
DISCOUNTS  
AVAILABLE

Send us your photos and we will enhance and return them to you within 24-48hrs, depending on complexity

Quickly and easily enhance your property photos to give you a competitive edge. Transform an entire property, inside and out with Photofixr™.

[www.photofixr.co.uk](http://www.photofixr.co.uk)





Call: 0191 9179331

Email: [client.support@ravensworth.co.uk](mailto:client.support@ravensworth.co.uk)

---

 [@RavensworthUK](https://twitter.com/RavensworthUK)

 [uk.linkedin.ravensworth.co.uk](https://uk.linkedin.com/ravensworth.co.uk)

**[ravensworth.co.uk](https://ravensworth.co.uk)**

---